

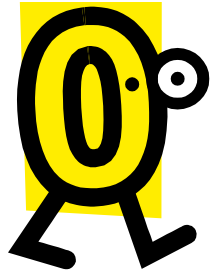
Eine Kleine Rallyeschul

(with apologies to my German instructors)

don't let the **fear** of
being

lost overshadow the **fun**
of

not knowing where you
are



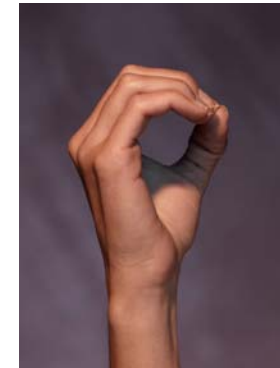
Scoring



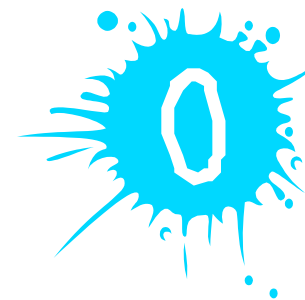
Scoring is based on how long it takes you to get to the end of each leg

- ✓ if you're late you get points
- ✓ If you're early you get points

The FEWEST points wins



There may be questions to answer as well



Legs

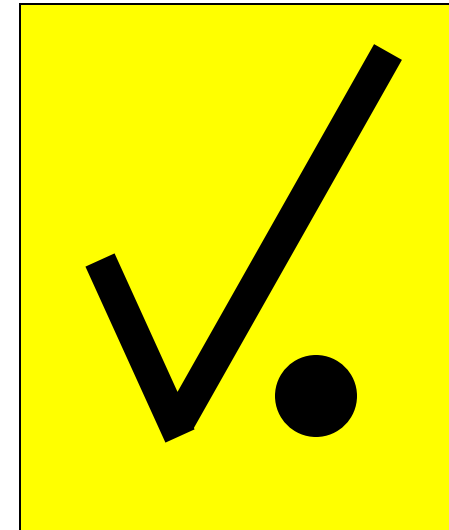
- ✓ Odometer (Odo) Check
 - ✓ Match the official measurement
 - ✓ Divide your mileage by the official mileage to get your correction factor

$$\frac{\text{YOURS}}{\text{OFFICIAL}} = \frac{23.25}{21.00} = 1.06$$

CAST 30 means $\text{CAST } 30 * 1.06 = 31.8$

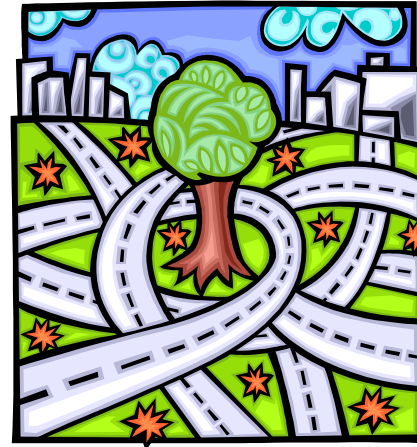
Timed Legs

- ✓ Each leg is scored separately
- ✓ Checkpoints
 - ✓ Are the end of a leg
 - ✓ You will be timed in
 - ✓ You have a fresh start for the next leg
- ✓ Don't stop at the checkpoint sign
- ✓ Don't get out of your car
- ✓ Don't block the re-start (outpoint)



It's Easy!!!

✓ Stay on Course



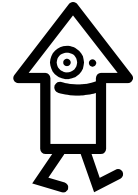
✓ Stay on Time



What Guides Your Course?

- ✓ Organizational rules (PCA PCR's)
- ✓ General Instructions – you get them ahead of time
- ✓ Supplemental Instructions
- ✓ Route Instructions – passed out a short time before the rally start

Course Following



All you have to do is follow the course

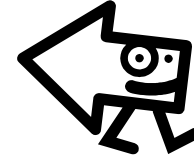
Generals



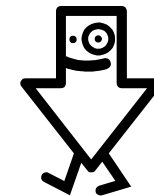
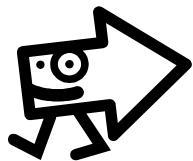
Main Road Rule

Supplementals

Numbered Route Instructions



All off course excursions begin at an intersection



Therefore:

At every intersection know:

- ✓ which way you should go and
- ✓ why you are going that way

Corollary:

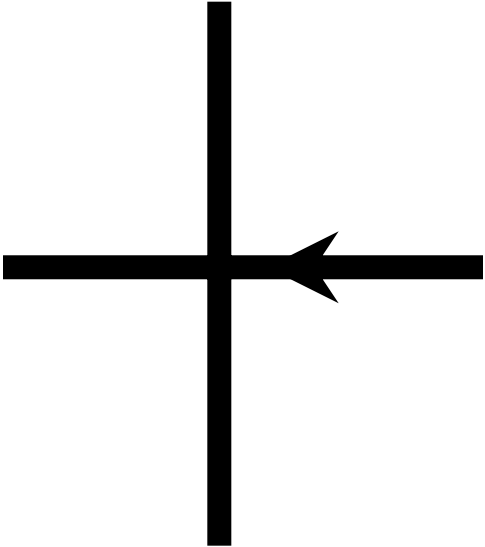
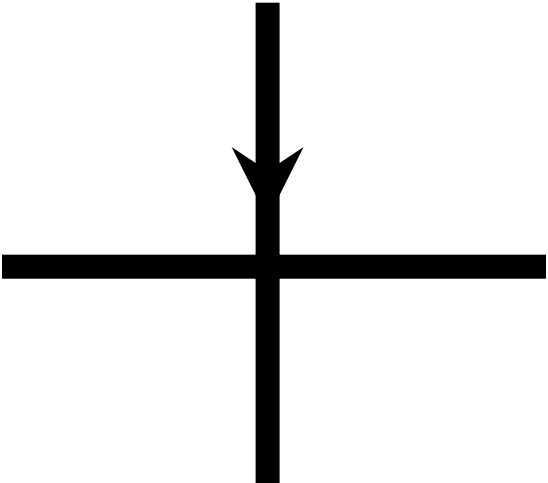
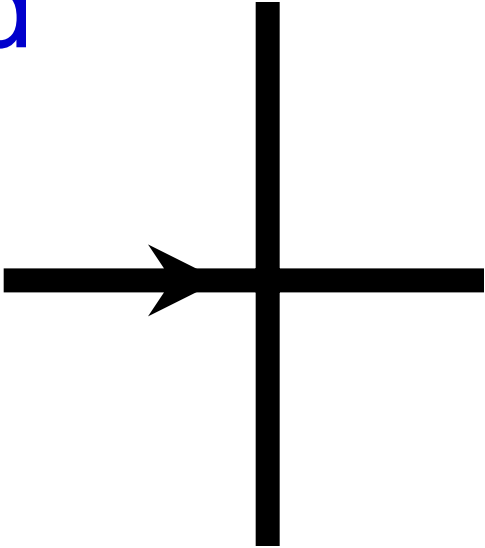
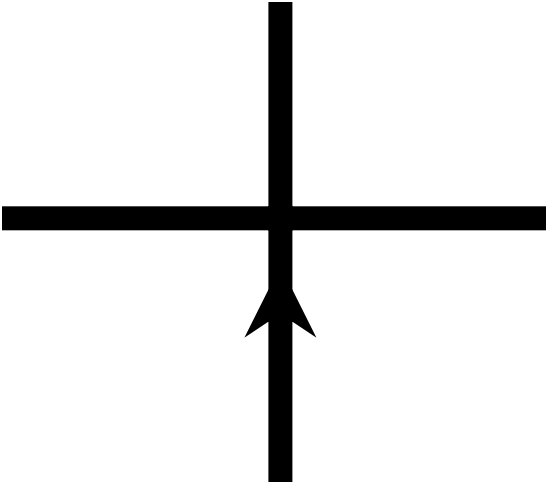
- ✓ know what intersections are
- ✓ know what the instructions mean

Intersections

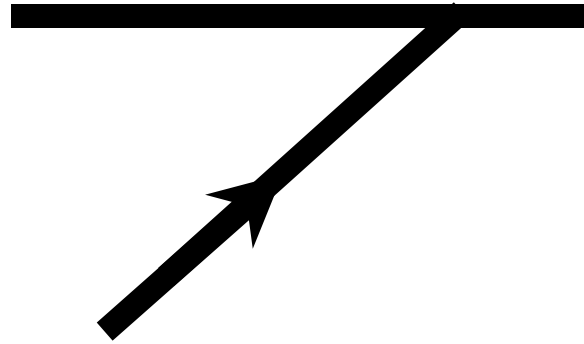
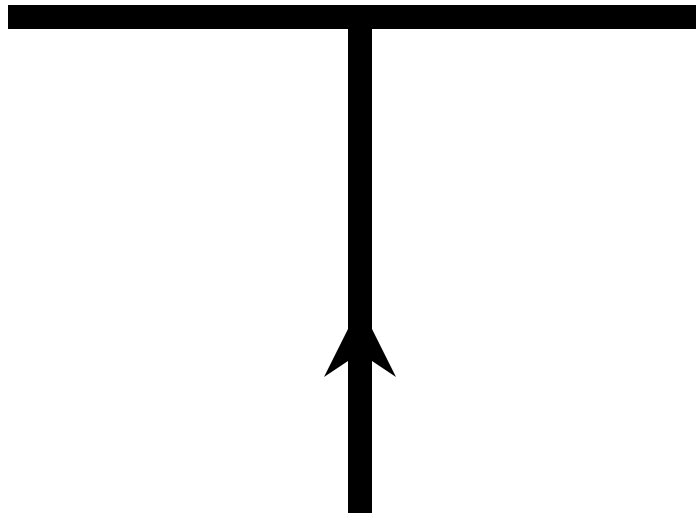
A meeting of rallye roads

- ✓ Crossroad
- ✓ 'T'
- ✓ 'Y'
- ✓ Sideroad

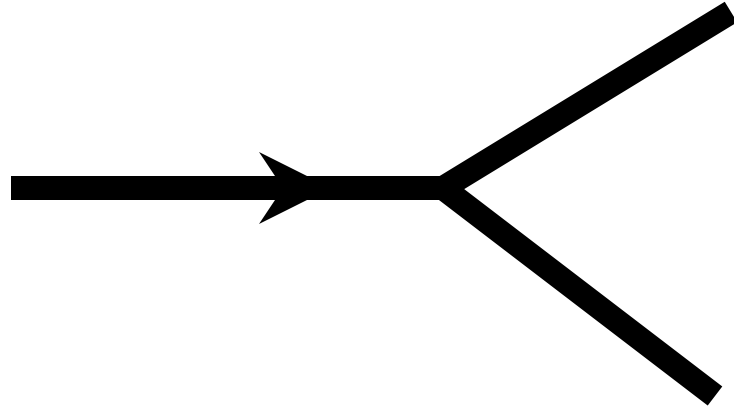
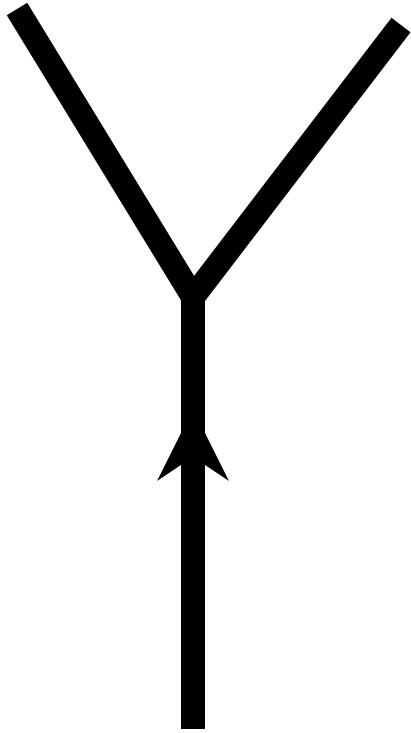
Crossroad



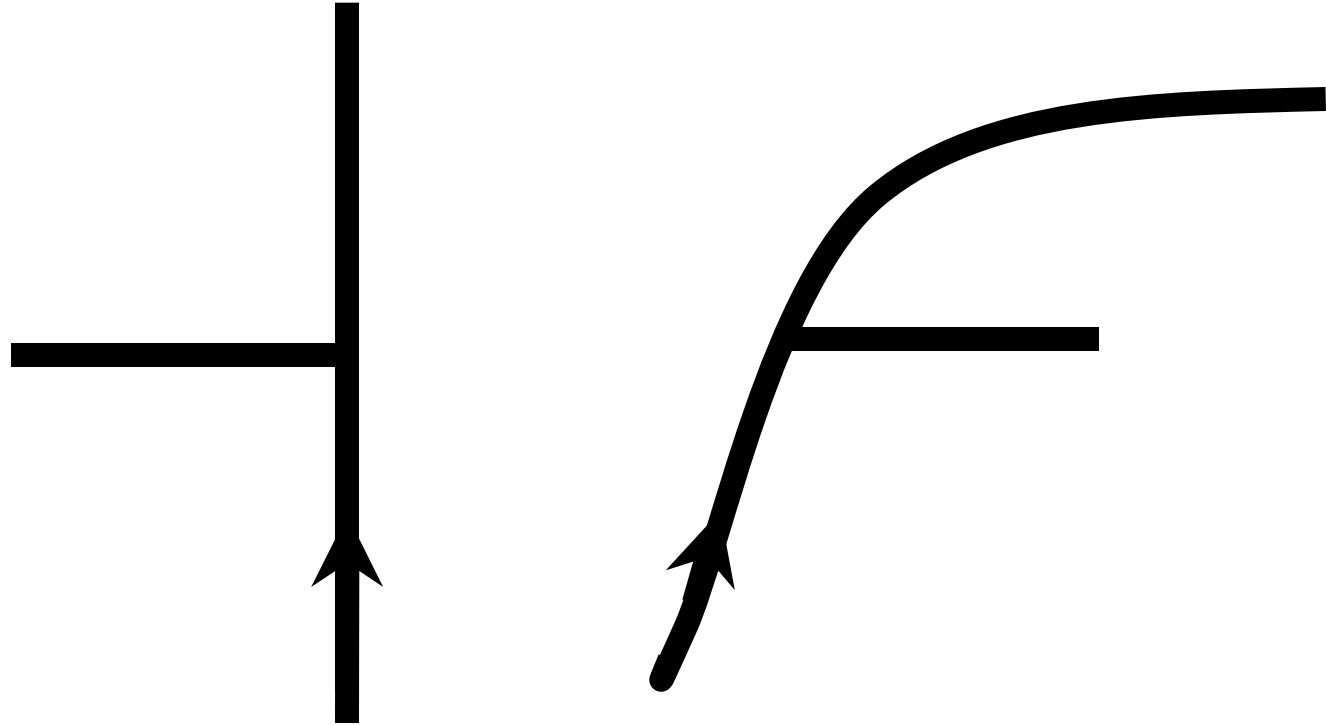
“T”



“Y”



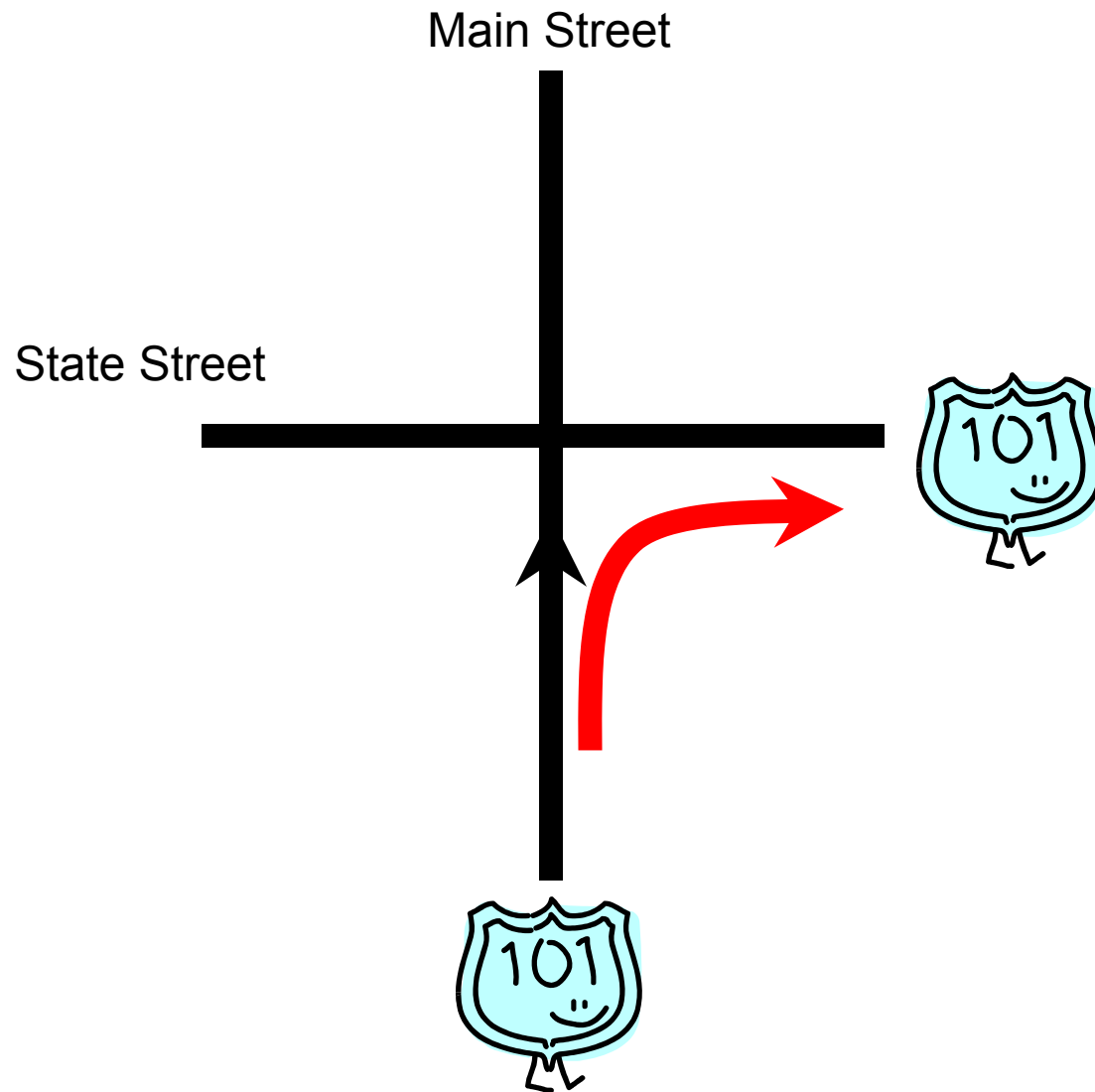
Sideroad



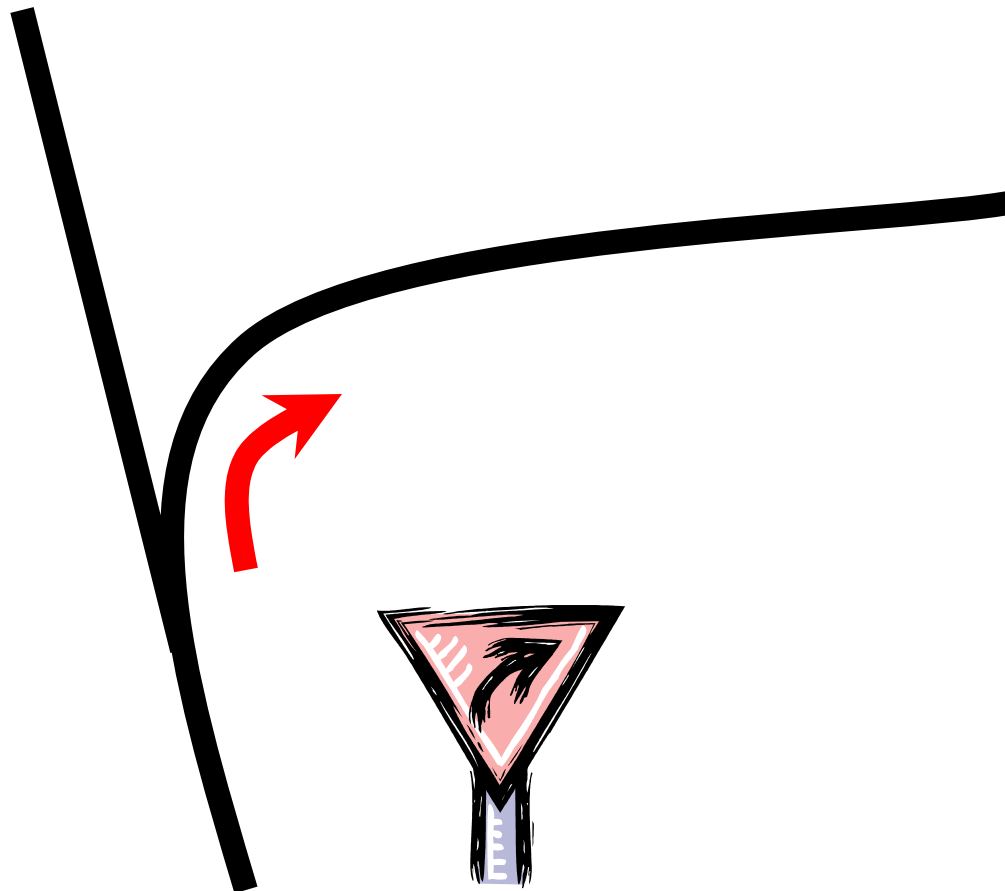
Main Road Rule Example

- ✓ ONTO
- ✓ CWA
- ✓ Protection
- ✓ Surface
- ✓ L or R at “T”
- ✓ as Straight as Possible

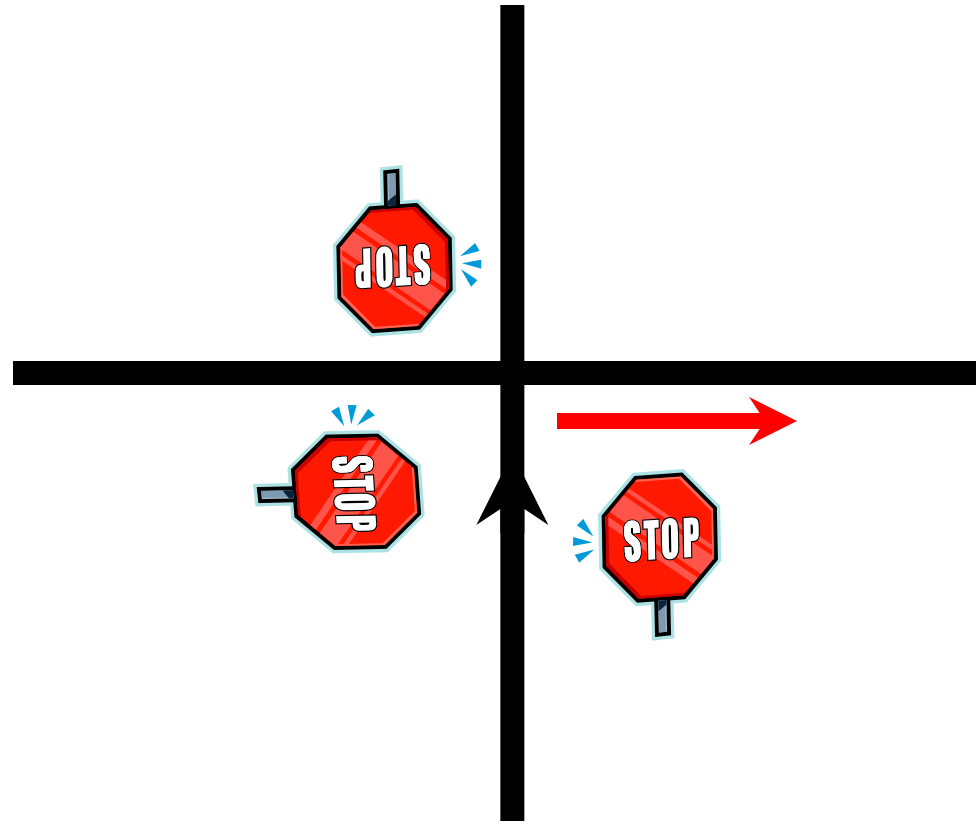
ONTO



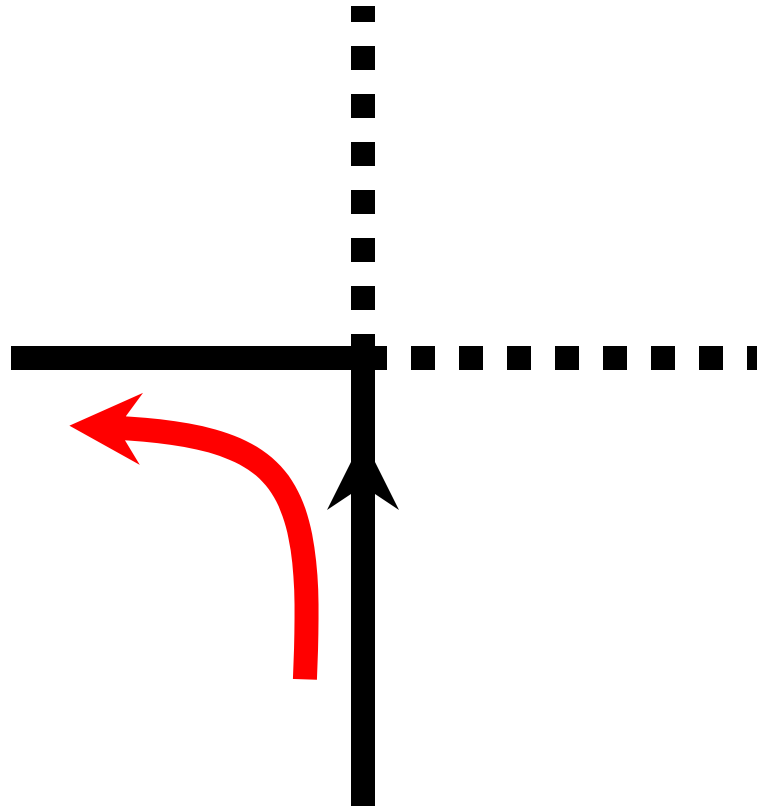
CWA – Curve Warning Arrow



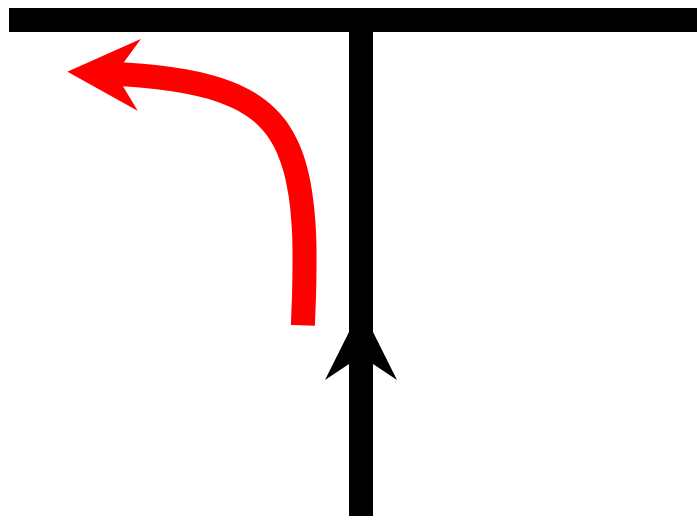
Protection



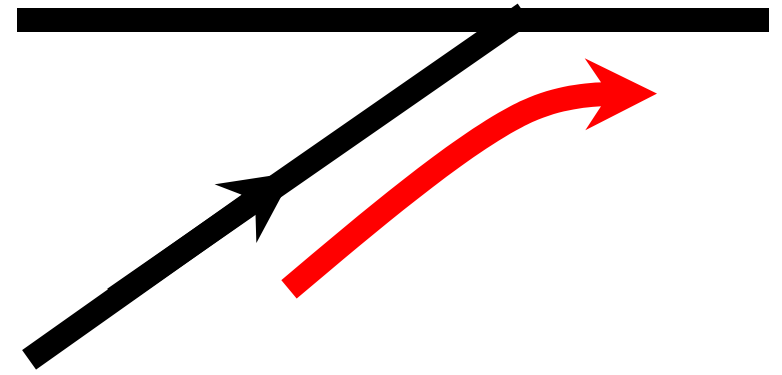
Surface



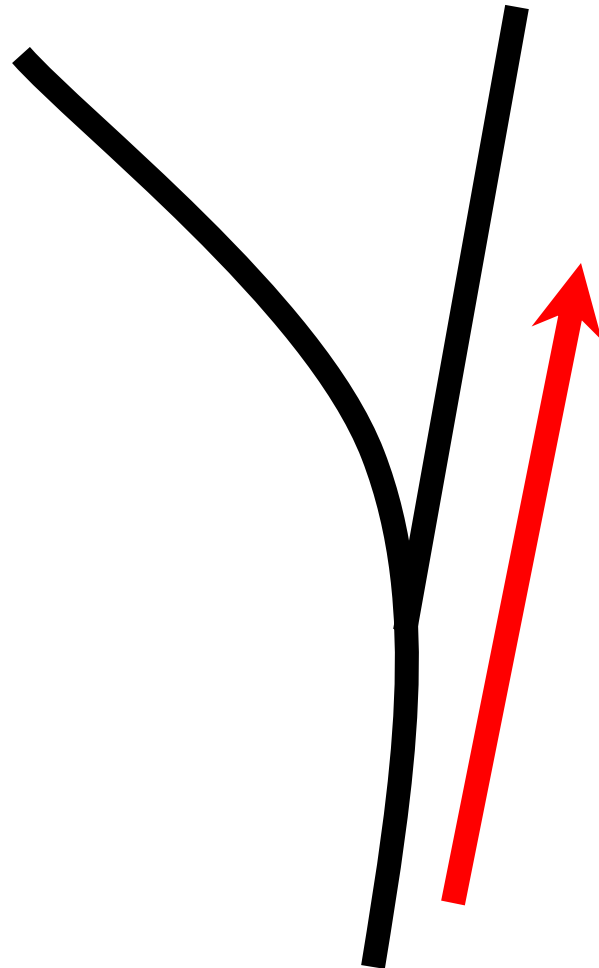
Left at "T"



Right at "T"



As Straight As Possible



So much for intersections ...

Other things that can let you know you are on ... or off course:

- ✓ Signs
- ✓ Landmarks
- ✓ Maximum distance between NRIs

Signs & Landmarks

Eat at Joe's
3 miles Ahead

Watch for cyclists next 3 miles



Signs

- ✓ Can be quoted in full or in part (spelling counts)
- ✓ Consecutive words unless RIP
- ✓ In quotes
- ✓ Upper and Lower Case
- ✓ Spacing, fonts, graphics, punctuation, case are irrelevant
- ✓ On the right unless otherwise noted
 - ✓ SOL or SA
- ✓ Not on mailboxes, poles, or road surfaces



Cross

CHILDREN

Walk



Happy

CHILDREN

Ride

Cross Walk

Children Ride

Children

Walk Happy

Landmarks

- ✓ Object or feature
- ✓ Written in CAPS and no quotation marks
- ✓ Must be defined in the Generals or have an identifying sign

Numbered Route Instructions

- ✓ Change Course
- ✓ Change Speed
- ✓ Confirm or Observe
- ✓ Start or End Special Segments
 - ✓ Free Zone (no checkpoints for a specified distance)
 - ✓ Transit Zone (long time to go a short distance)
- ✓ Other Necessary Info
- ✓ Must adhere to the rules of PCA and the general instructions

Route Instructions

- ✓ Numbered – complete and in order
- ✓ Note any that are out of sequence
- ✓ Occasionally there will be an instruction such as:
 - ✓ ITIS - If There Is Such
 - ✓ WCF – Whichever Comes First. Always in conjunction with OR. Do 'X' OR 'Y' WCF.

Sample

- 24 STRAIGHT at W 6th Ave ONTO
Jefferson Co Pkwy
- 25 LEFT ONTO West 10th Ave
- 26 RIP "Prisoner Intake"
- 27 LEFT at T, **CAST 35**
- 28 "Roundabout Ahead"
- 29 LEFT ONTO South Golden Road,
CAST 25
- 30 "First Presbyterian"
- 31 STRAIGHT ONTO East Street,
CAST 15
- 32 SOL "Buy-Back Games"
- 33 "2221"
- 33 RIGHT at 13th Street
(Redundant), **CAST 25**
- 34 TUNNEL
- 35 SOL RIP "32nd Avenue Entrance"
- 36 "35", **CAST 35**
- 37 RIP "Next Mile"
- 38 LEFT ON McIntyre, **CAST 40**
- 39 "Colo Railroad Museum"
- 40 LEFT, **CAST 45**
- 41 "Boom Up Crane Service Inc."
- 42 RAILROAD CROSSING, **CAST 35**
- 43 RIGHT at "Easley Road", **CAST 15**
- 44 SOL "Saddle Creek", **CAST 30**
- 45 RIP "Adopt a Highway"

!! Important !!

You must complete the
current instruction

BEFORE

beginning on the next
instruction

Change Course

Follow the **Main Road Rule**

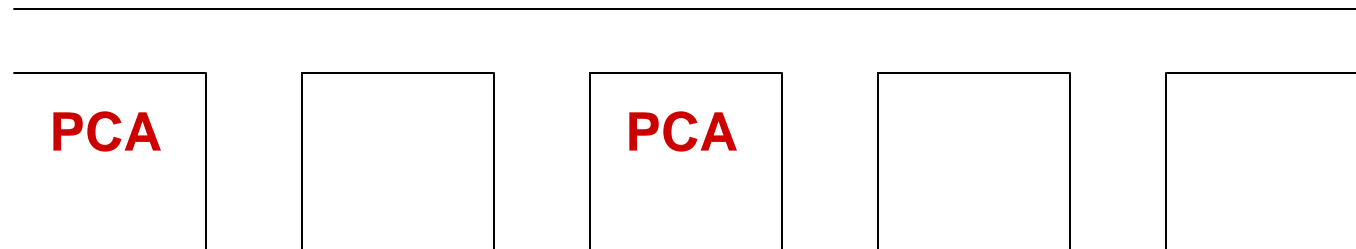
- ✓ On or ONTO
- ✓ As Straight as Possible

Note any special items

- ✓ Through, public roads
- ✓ Could use short stretches of gravel road
- ✓ Roundabout – direction of travel

Counting

Since you must start anew after each instruction, any counting, measurement, etc. starts over.



23. PCA

24. 2nd Right after PCA

Change Speed

- ✓ **CAST** – Change Average Speed To
 - ✓ This is where you use that odo check leg information to adjust your average speed so you aren't going too fast or too slow.
- ✓ **Pause** – stop for a given period of time at
 - ✓ Stop signs
 - ✓ Traffic lights
 - ✓ RR Tracks

Confirm or Observe

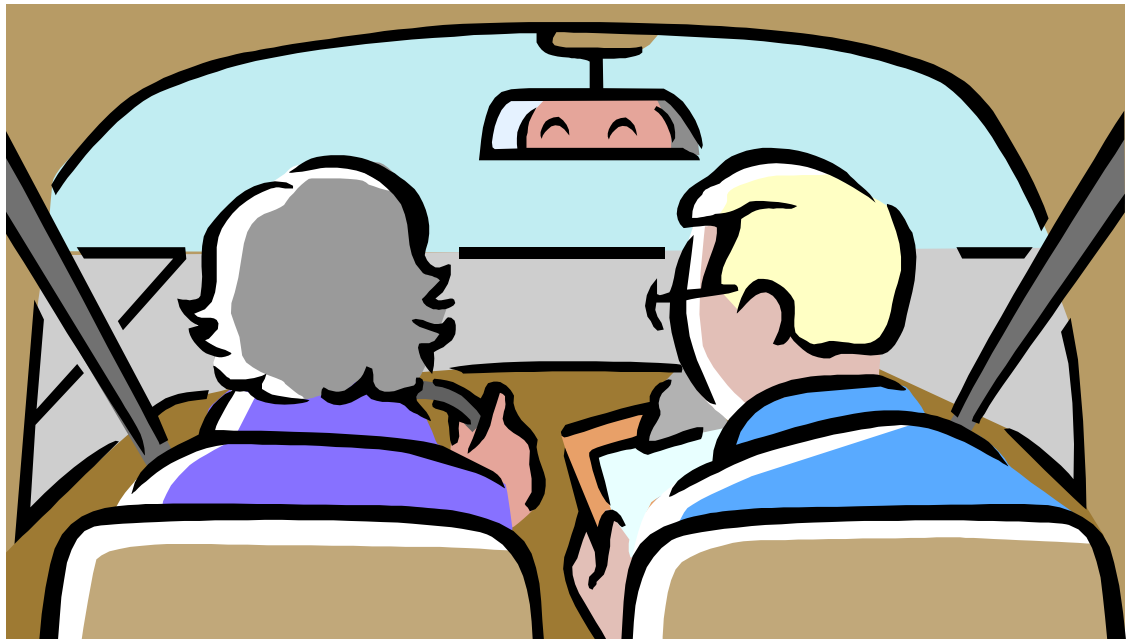
- ✓ Note a sign or landmark on the route
 - ✓ This will not cause you to change course or speed, but will confirm that you are on the correct course
- ✓ Fill in the blank
 - ✓ There may be questions you need to answer (fill in the blank) along the route.
- ✓ Distance between instructions
 - ✓ The longest distance between instructions; if you've gone farther, you are off course

Start or End Special Segments

- ✓ **Transit Zone** – in this zone, you will have a long time to go a short distance. Usually done in conjunction with a meal or rest stop.
- ✓ **Free Zone** – a distance in which there are no timing controls.

Summary

- ✓ Stay on Course
- ✓ Stay on Time
- ✓ Have Fun!



Glossary

CAST = Change Average Speed To

NRI = Numbered Route Instruction. Do these in numerical order

Opportunity = a place at which the specified action can be taken

PAUSE = A time allowance to be included in the calculated time. Does not cancel an average speed or void an ONTO

RIP = Reading in Part or **SRIP** = sign reading in part

SOL = Sign on Left or **SA** = Sign Anywhere

STOP = an octagonal stop sign at which the vehicle is obligated to stop